

DE.DE

快速安全夾頭 FAST QUICK CHUCKS



良譽有限公司
DE' DE TRADE CO., LTD

公司地址:台中市西屯區天水東一街40號1樓

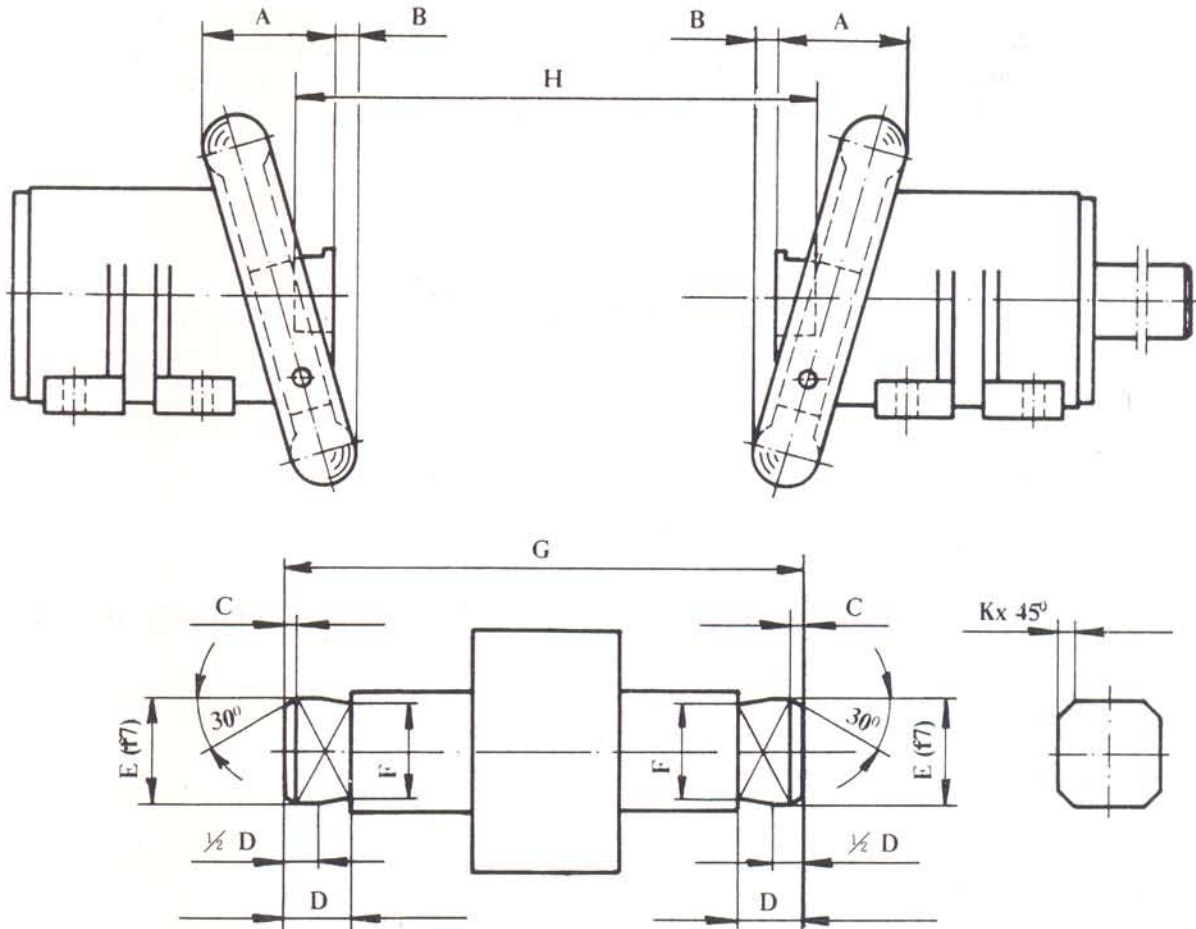
Offices: 1F, No. 40, Tien Shei Toung 1 Street, Taichung, Taiwan

Tel: 886-4-23160121 Fax: 886-4-23160140

Email: dede.trade@msa.hinet.net

Winding Shaft Tolerances

Pillow Block and Flange (Mounted) Chucks



Safety Chucks	A	B	C	D	E (f7)	F-E	1/2 D	H-G	K
Mini 14-20	38	8	3	15	14-20	0,1	7,5	0,5	1
22-30	61	8	4	28	22-30	0,15	14	0.5	1
30-40	73	13	5	30	30-40	0,2	15	0.5	1,5
40-50	81	13	5	32	40-50	0,3	16	0.5	2
50-80	106	16	6	40	50-80	0,4	20	0.5	3
80-120	145	18	16	60	80-120	0,5	30	0.5	4

Attention !

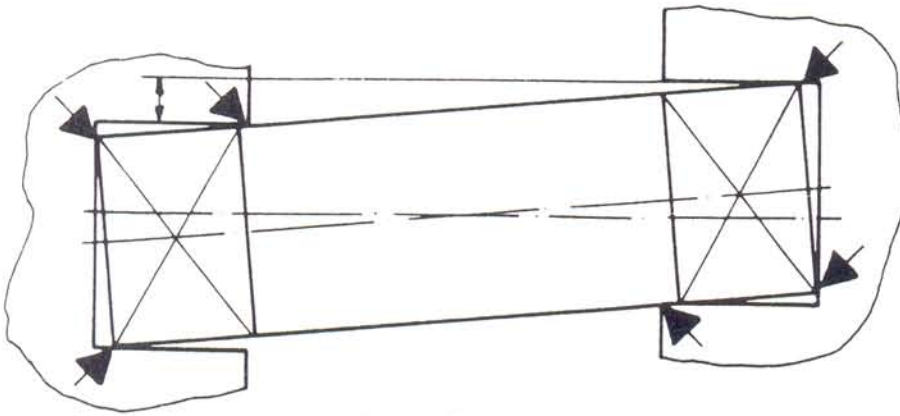
We emphasize that the close tolerances and exact manufacture of our new chucks make it necessary to machine the winding shafts referring to the drawings and dimensions above.

Before running the chucks for the first time, please check if the handwheels close easily to ensure that the winding bar fits correctly. Thank you for your co-operation.

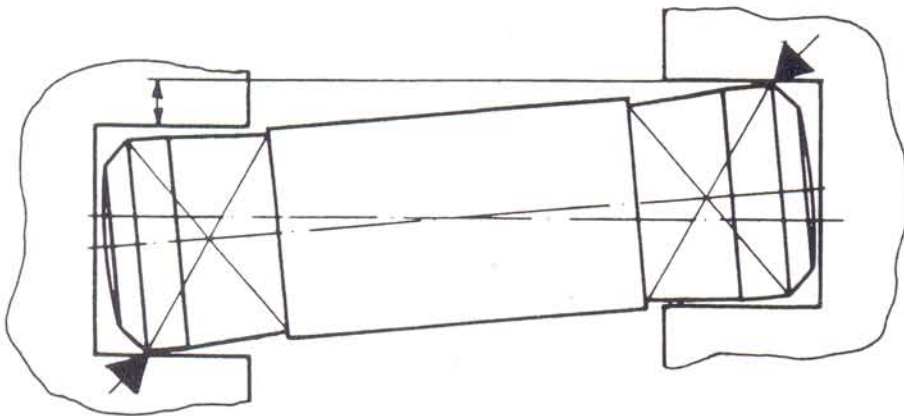
Safety Chuck – Assembly Instruction

Pillow Block and Flange Chucks

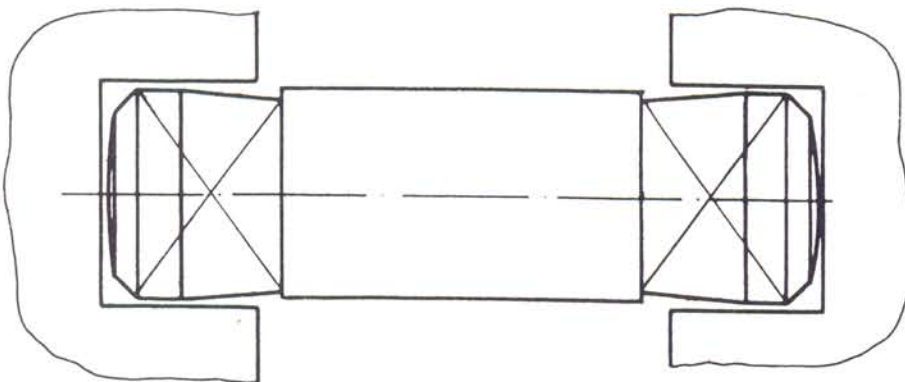
In order to protect your chucks against increased wear it is necessary to have a perfect alignment of the chucks. Any misalignment of the unit cuts down on the life of your shaft and safety chuck. The factory cannot provide any warranty if the chucks are not mounted as we recommend.



wrong alignment



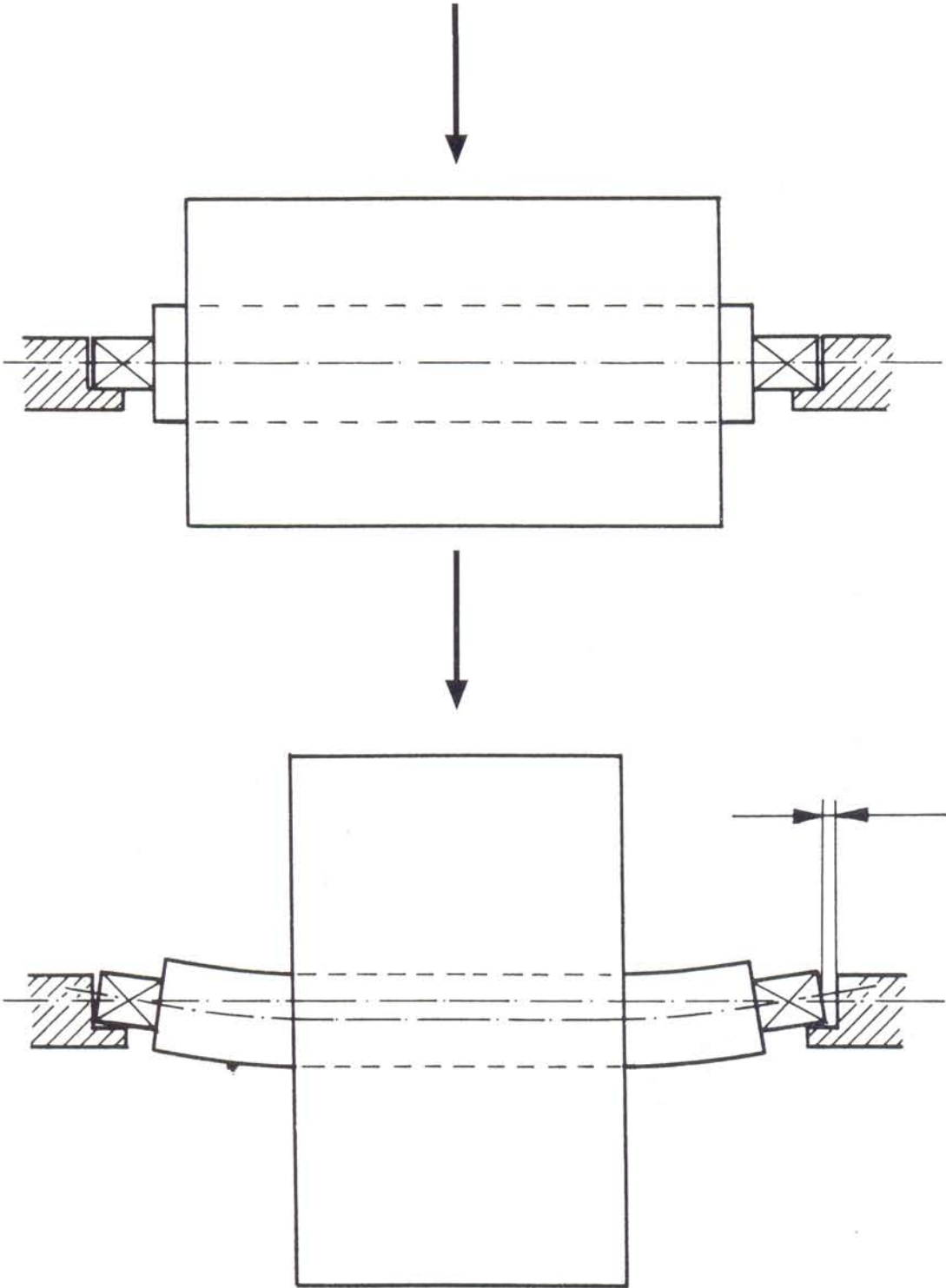
wrong alignment



correct alignment

Safety Chuck—Assembly Instruction

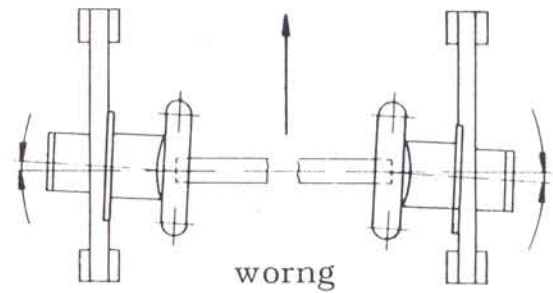
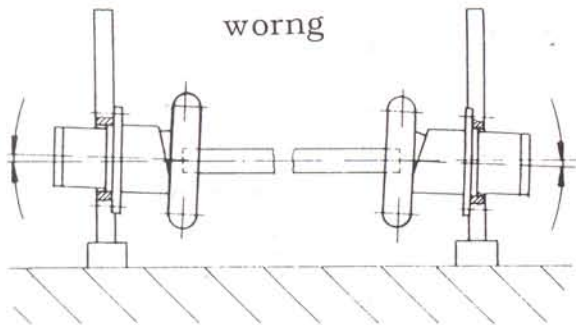
Different winding width on similar winding shaft



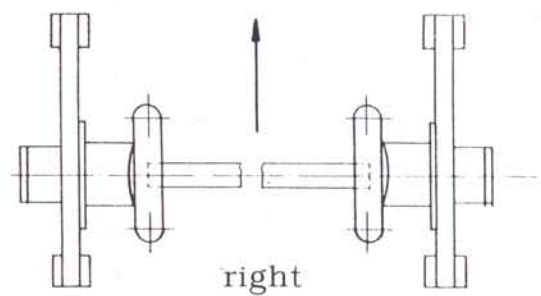
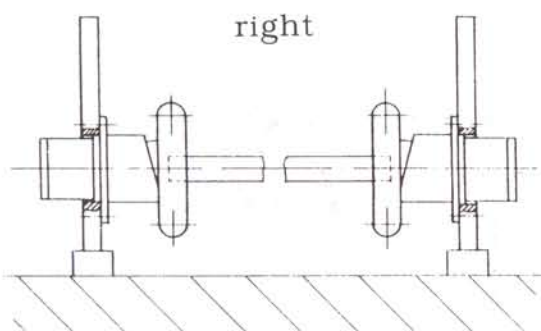
Different space existing !

Safety Chuck – Assembly Instruction

Pillow Block and Flange Chucks



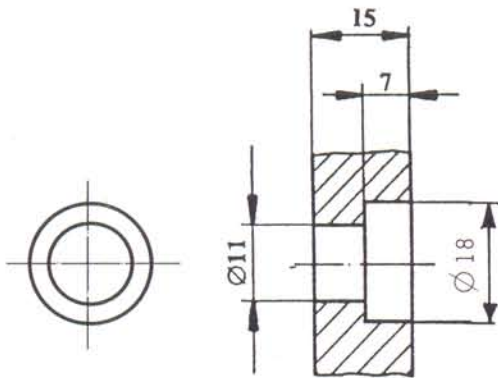
This drawing shows that even with a correct alignment the safety chucks can be mounted wrong. Such mounting problems provide a wear in the square bar opening and journals same as fibration problems in the machine.



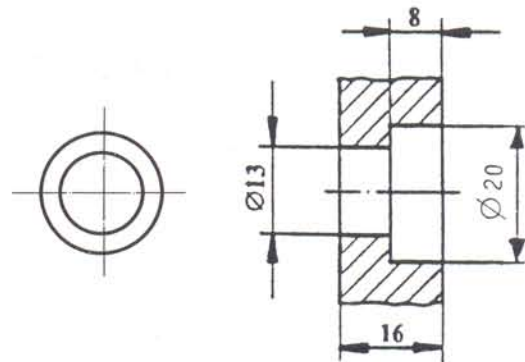
For the correct mounting of the safety chucks it is not only necessary that they are mounted in the same height and distance, it is also very important that they are correct aligned.

Attention! On customers request we are manufacturing the countersinks for flange mounted chucks as follows:

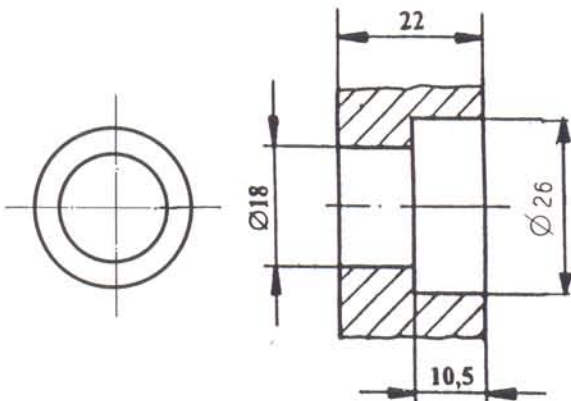
Type 22-30 FLO/FLW



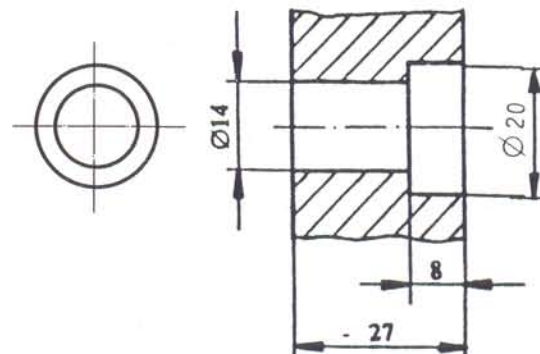
Type 30-40 FLO/FLW



Type 40-50 FLO/FLW



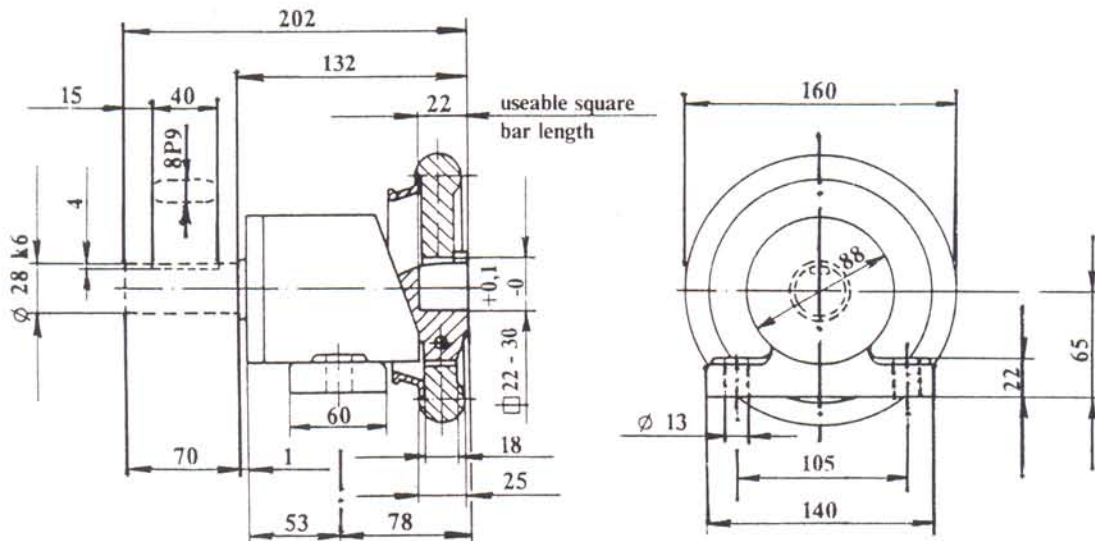
Type 50-80 FLO/FLW



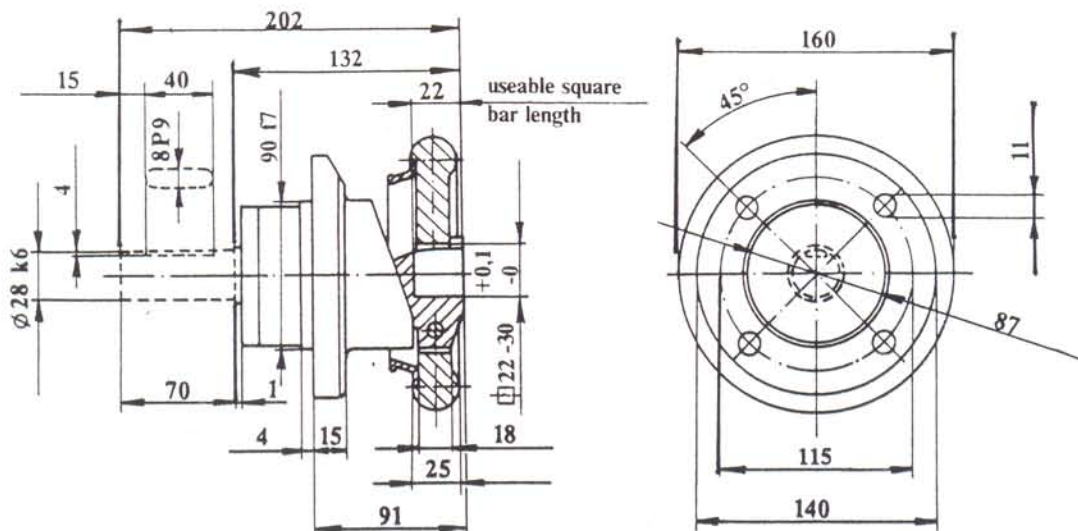
Pillow Block and Flange Chucks Type 22-30 STO/STW-FLO/FLW

Max. beam weight	最大樑重量	800kg
Max. torque	最大扭力	18kgm
Square bar size	方型棒尺寸	25, 30mm

Pillow Block Chuck Type 22-30 STO/STW



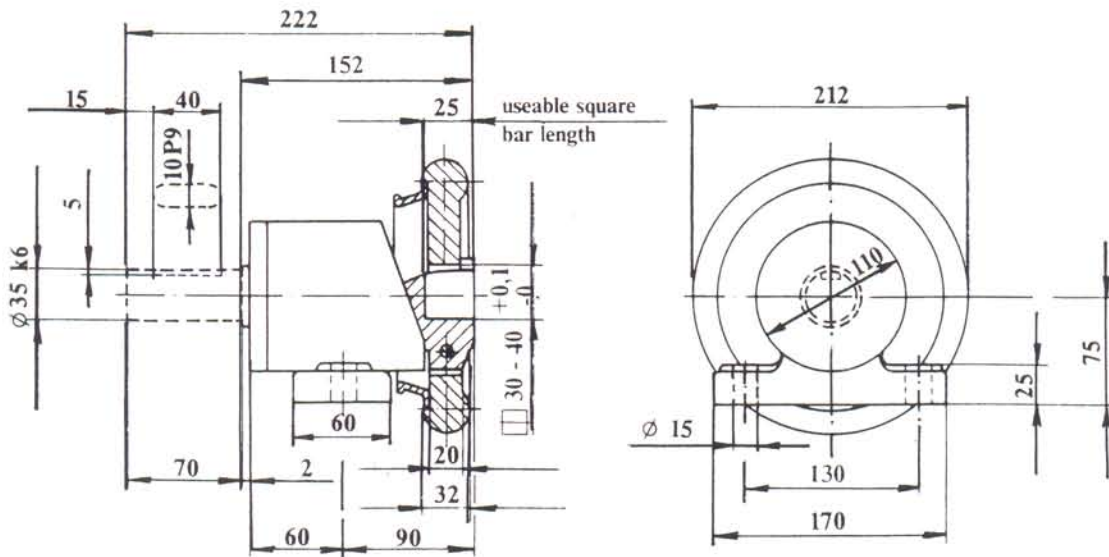
Flange Chuck Type 22-30 FLO/FLW



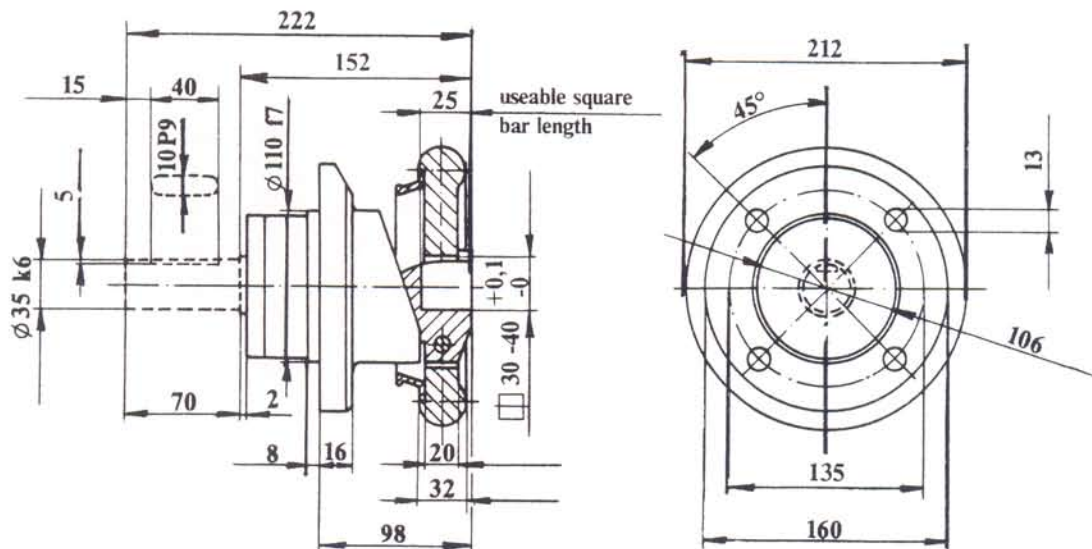
Pillow Block and Flange Chucks Type 30-40 STO/STW-FLO/FLW

Max. beam weight	最大樑重量	1600kg
Max. torque	最大扭力	35kgm
Square bar size	方型棒尺寸	32, 38, 40mm

Pillow Block Chuck Type 30-40 STO/STW



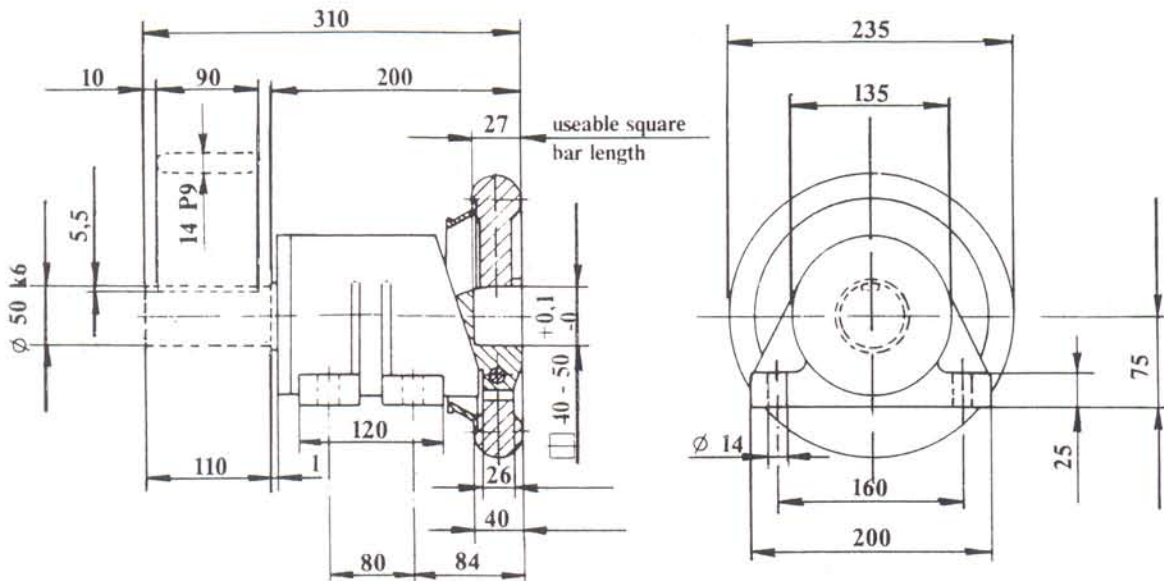
Flange Chuck Type 30-40 FLO/FLW



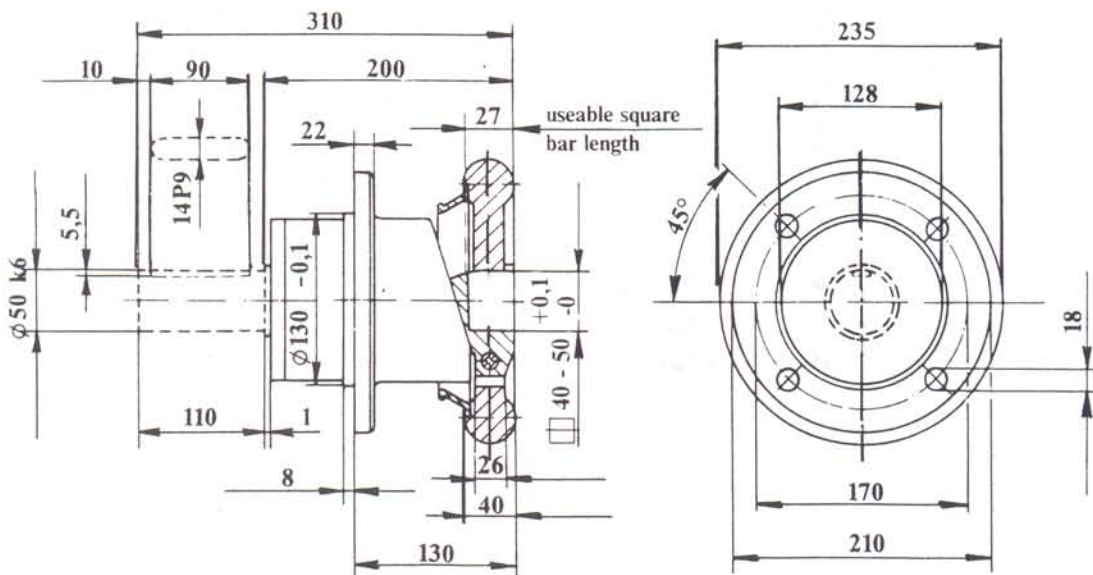
Pillow Block and Flange Chucks Type 40-50 STO/STW-FLO/FLW

Max.beam weight	最大樑重量	2800kg
Max.torque	最大扭力	110kgm
Square bar size	方型棒尺寸	40, 45, 50mm

Pillow Block Chuck Type 40-50 STO/STW



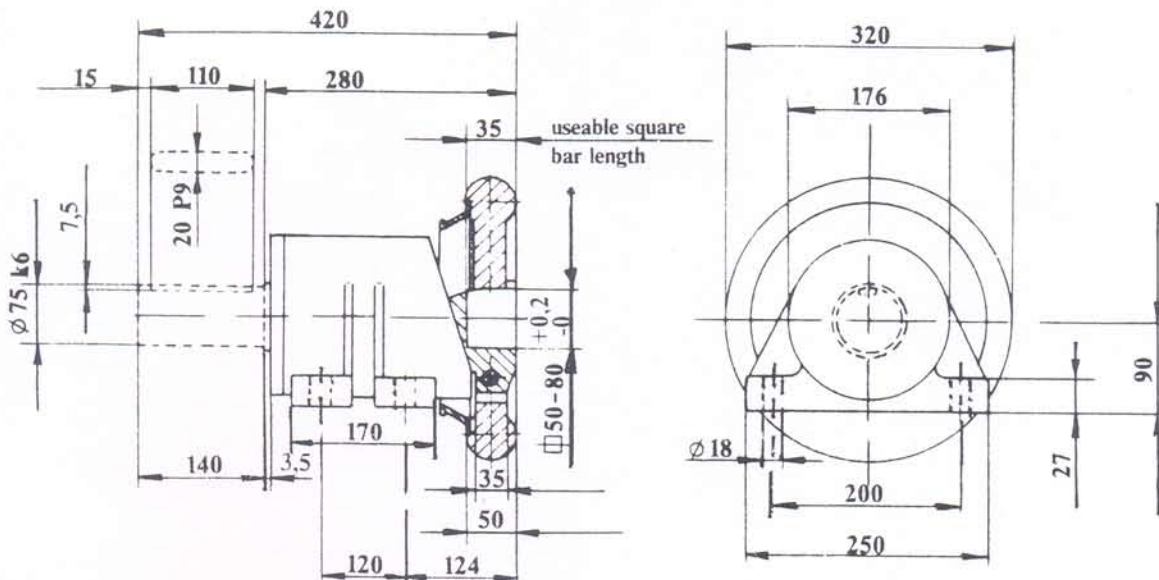
Flange Chuck Type 40-50 FLO/FLW



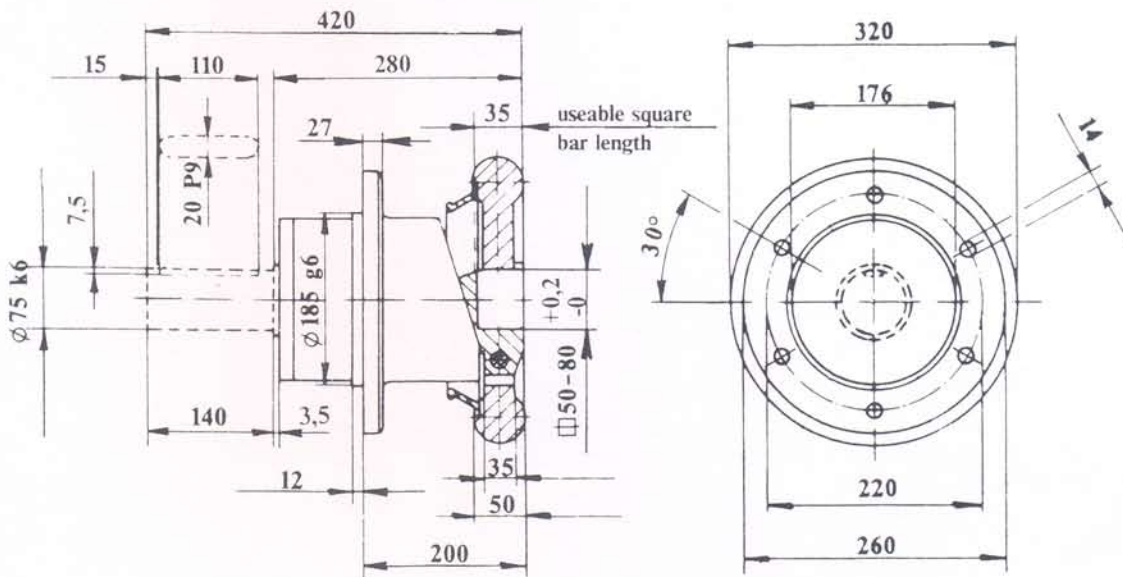
Pillow Block and Flange Chucks Type 50-80 STO/STW-FLO/FLW

Max. beam weight	最大樑重量	7000kg
Max. torque	最大扭力	235kgm
Square bar size	方型棒尺寸	50, 75 mm

Pillow Block Chuck Type 50-80 STO/STW



Flange Chuck Type 50-80 FLO/FLW





良譽有限公司

De'De TRADE CO., LTD.

TEL: 04-23160121

Fax : 04-23160140

Address : 台中市西屯區天水東一街